

Fleischmann Turntable Instructions (9152C).

The FLEISCHMANN Turntable 9152C was constructed as a built-in turntable. Complete with trench and turning platform this is a true-to-life model.

The turntable is electrically operated and can be operated remotely by the turntable switch 6910, which is included. The switch will fit into the FLEISCHMANN diagrammatic control (Fig. 1).

Installation:

For installing the turntable you will need a hole with 340 mm diameter in your layout board. It will not be necessary to fasten it down, as the turntable will be stopped at fastened tracks. If the turntable has to be laid on top of the layout, a base of polystyrene (or similar) should be laid underneath. In this case entry and exit ramps 30 mm high must be created for the tracks. The turntable is divided into 7.5° sections with a maximum of 48 possible rail connections.

The 7.5° sections are provided to match up to the standing position of 3 locos in the loco shed 9475. The turntable can also be set up for 15° section operation. In this case only one cover plate should be left between the sidings (Fig. 2). The 7.5° track angle of the Turntable 9152C, is compensated for by fitting a Track Section 9127. The inner circle track runs parallel to the nearest track.

Connecting the motor of the platform:

Attention! First connect all of the wires of the turntable and its switch before you connect the mains transformer to the AC-outlet. Otherwise you risk the damage of the switch caused by short-circuit. The 3 wires, red, yellow and grey must be connected to the corresponding wires on the switch, if necessary with the 6941 connector. The black and white wire from the switch must go to the A. C. connection on the transformer/controller (type 670601, 6725, 6735, 6755/Fig. 3), also for digital operation. **Rotating the turntable by hand, see fig. 11 and 12.**

Connecting current to the platform:

The twin yellow wires of the turntable should be connected to the clips for the D. C. on the transformer (Fig. 3). If operating the layout digitally, then the twin yellow wires should not be connected to the digital transformer, but connected to the lilac and lilac/white of the digital controller.

Controlling the connecting track:

With this turntable switch the platform can be turned either to the left or right by means of the black switch. The platform stops automatically at each track. A continuous action through to your chosen position is possible if the switch is pushed into the direction of travel to its outer limit until the position is reached.

On reaching this position, it is stopped by pressing in the opposite direction (Fig. 4).

Feeding the connecting track with power:

In conjunction with the turntable switch 6910, each connecting track of this "thinking" turntable can be selected to be fed with power from the turntable bridge (Fig. 5/6). If the turntable switch 6910 is turned to the position marked (· ·), then the connecting track which is lined up with the turntable bridge side **with** the attendant's cab will be fed with power. If the turntable switch is turned to the position marked "w", then the connecting track which is lined up with the turntable bridge side **without** the attendant's cab will be fed with power. With this "comfort" turntable, then either one or the other track will be fed with power, and never both at the same time. In this way, a loco can be stored on a track without power, and simultaneously, one located on the track lined up immediately opposite the turntable bridge can still be operated.

Operation of the layout with two, or more, transformers:

The turntable area should be controlled by a separate transformer. All lines which go over into the turntable area should be cut off with two isolating fish plates 9403 (Fig. 7).

Operating of the layout with one transformer:

It is possible to operate the whole layout with just one transformer. As before all lines to the turntable area are cut off with two isolating fish plates 9403. Current is fed into the line. The turntable is also fitted with a switch 6904/6924 or a pause switch 6905 (Fig. 8).

Extensions:

With the Extensions Set 9153 the turntable can be extended to cope with three rail connections (Fig. 9). The turntable should be placed away from the area of the installed parts. The cover plates are now pulled up by pushing back the spring switch-tongues (Fig. 10), and stuck in the approach track. Every approach track is to be set up opposite a blind section or another approach track.

Rotating the turntable by hand:

Opposite the motor housing, under the turning table, is a small black lever. By pressing the lever towards the centre, the drive gear wheel is withdrawn from the teeth in the outer drive ring releasing the table so that it can be moved manually in the desired direction. When the lever is released the gear wheel is again enmeshed with the outer-ring. Ensure, however, that the rotating tracks are lined up with the exit tracks (Fig. 11). Should the turntable not operate, when pressing the switch 6910, simply press the lever slightly to ensure the gear wheel is firmly seated in the drive ring, which will then start it moving. It will then stop at the next track again (Fig. 12).

Oiling the motor:

To oil the drive motor both lattice cover plates must be removed from the machine house with a screwdriver (Fig. 13). Just one drop of oil should be put through the holes to lubricate the points as shown. Use either the Gaugemaster GM619 or the FLEISCHMANN-oil 6599 (Fig. 14).

Dismantling the table:

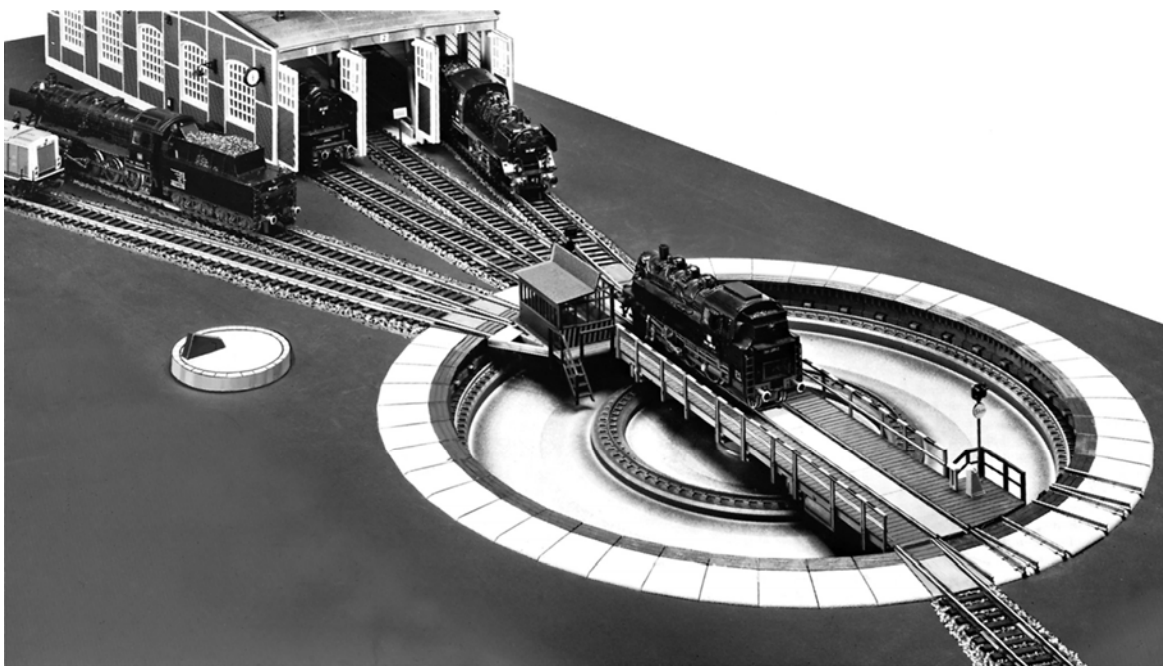
Should the turntable not operate by moving the lever, it will be necessary to dismantle the table. Using a small screwdriver, gently lift the small cover plate in the centre of the table between the two rails and spring off the cir-clip on the central pivot (Fig. 15). **Be careful not to lose the cir-clip.** On each side of the platform take off 6 opposing components (Fig. 10).

Now the platform can be removed. The contact points and springs round the central pivot should be cleaned. To put the table back together simply reverse the procedure.

In the unfortunate instance that the turntable should still not function, please return it to your local dealer or to your supplier or direct to the FLEISCHMANN Technical Centre.

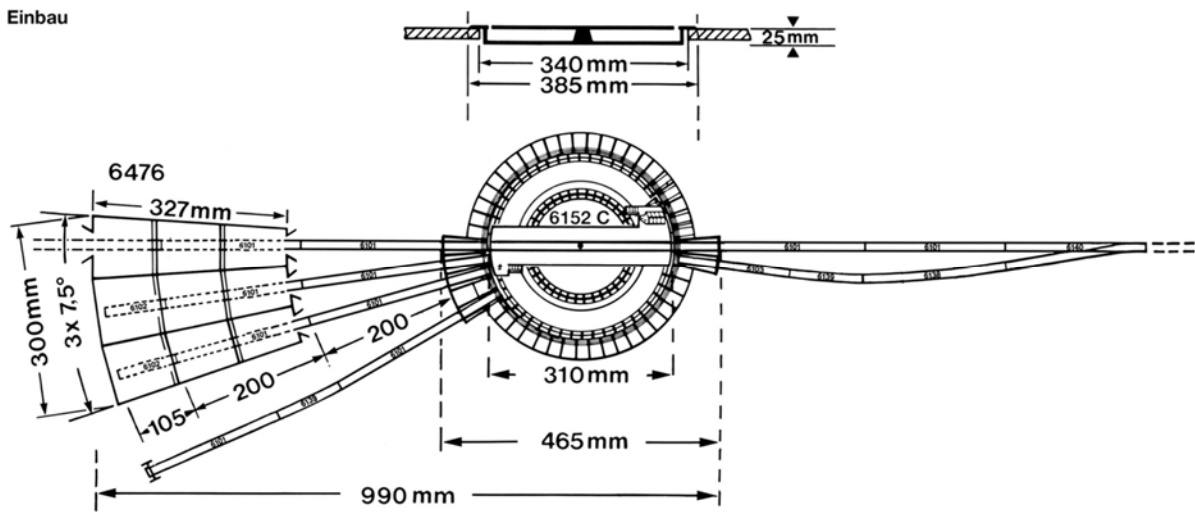
We reserve all rights to carry out alterations and improvements of all models or items.

(Fig 1)

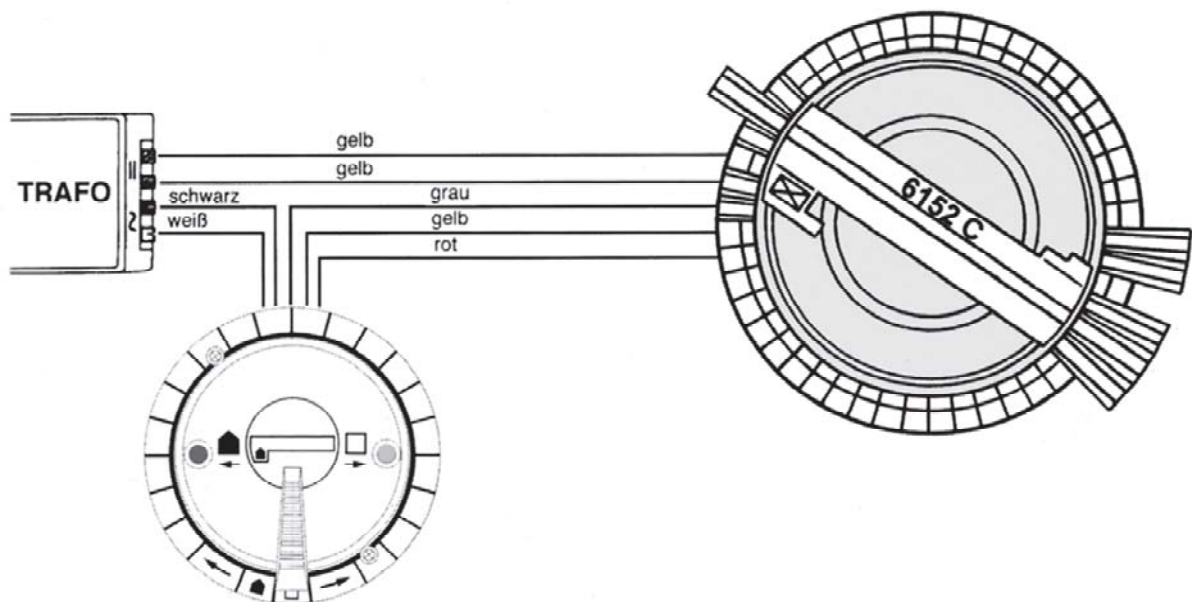


(Fig 2)

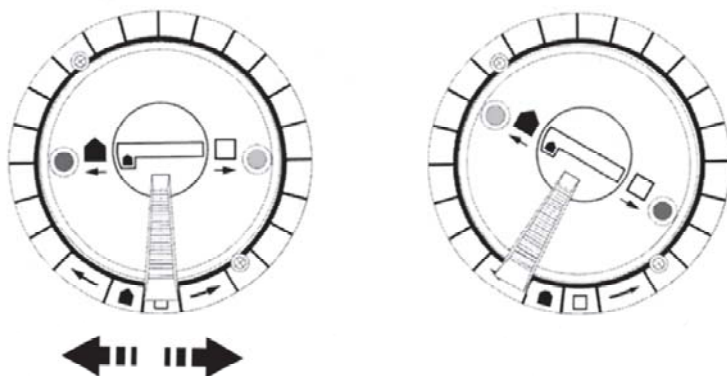
Einbau



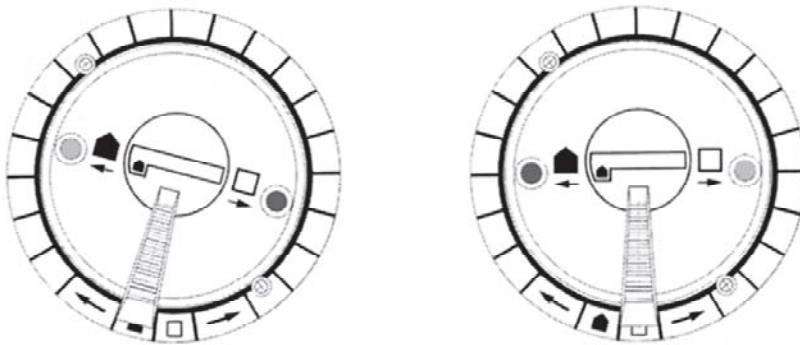
(Fig 3)



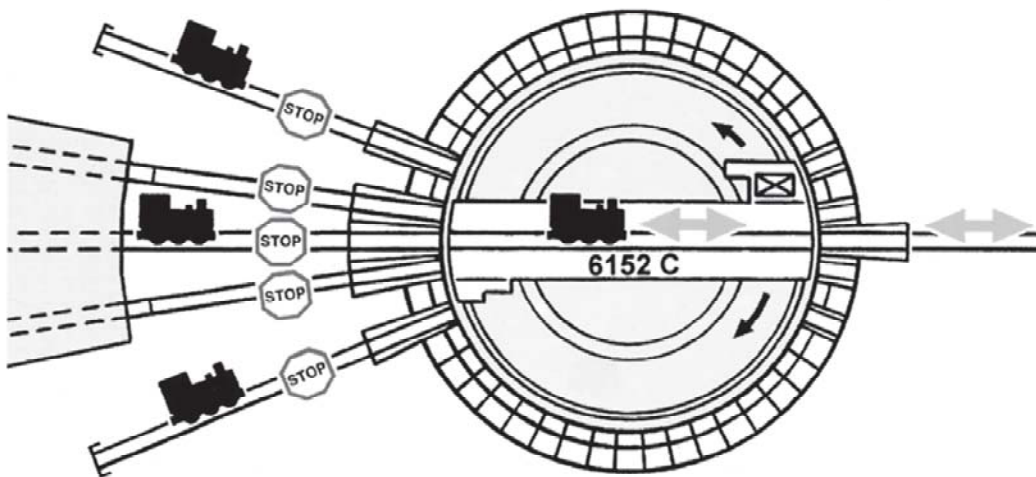
(Fig 4)



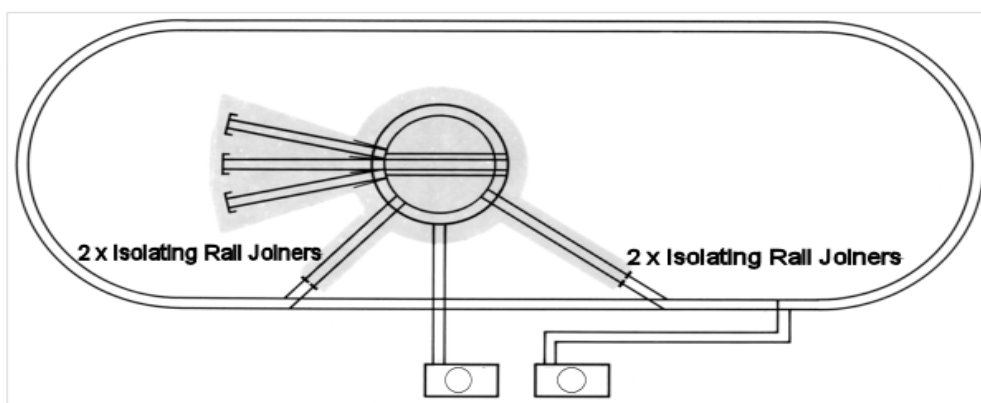
(Fig 5)



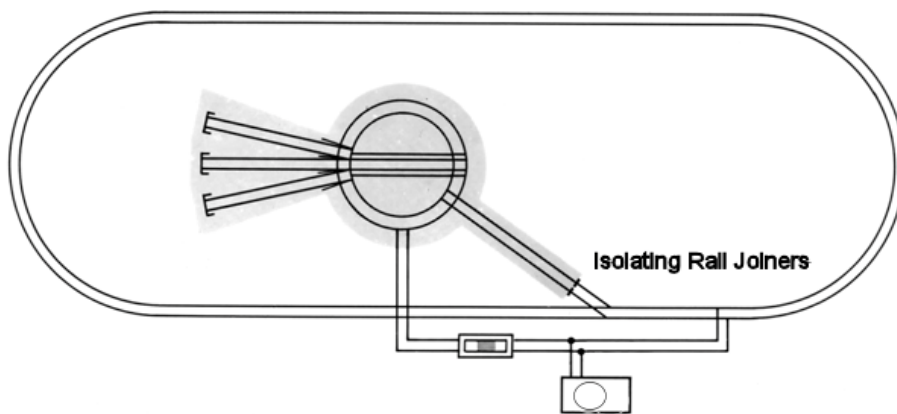
(Fig 6)



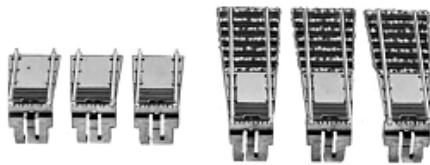
(Fig 7)



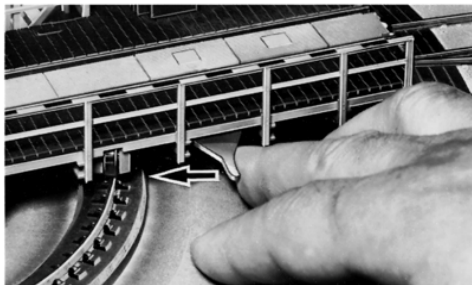
(Fig 8)



(Fig 9 + 10)



(Fig 11 + 12)



(Fig13 + 14)



(Fig 15)

